

evolve<sup>®</sup>  
by Granite

Ready  
Collective

[evolvegranite.work/ready-collective](https://evolvegranite.work/ready-collective)





# The office hybrid you've always needed.

Welcome to **evolve**® *Ready Collective*, Granite's latest innovation in move-in-ready workspace.

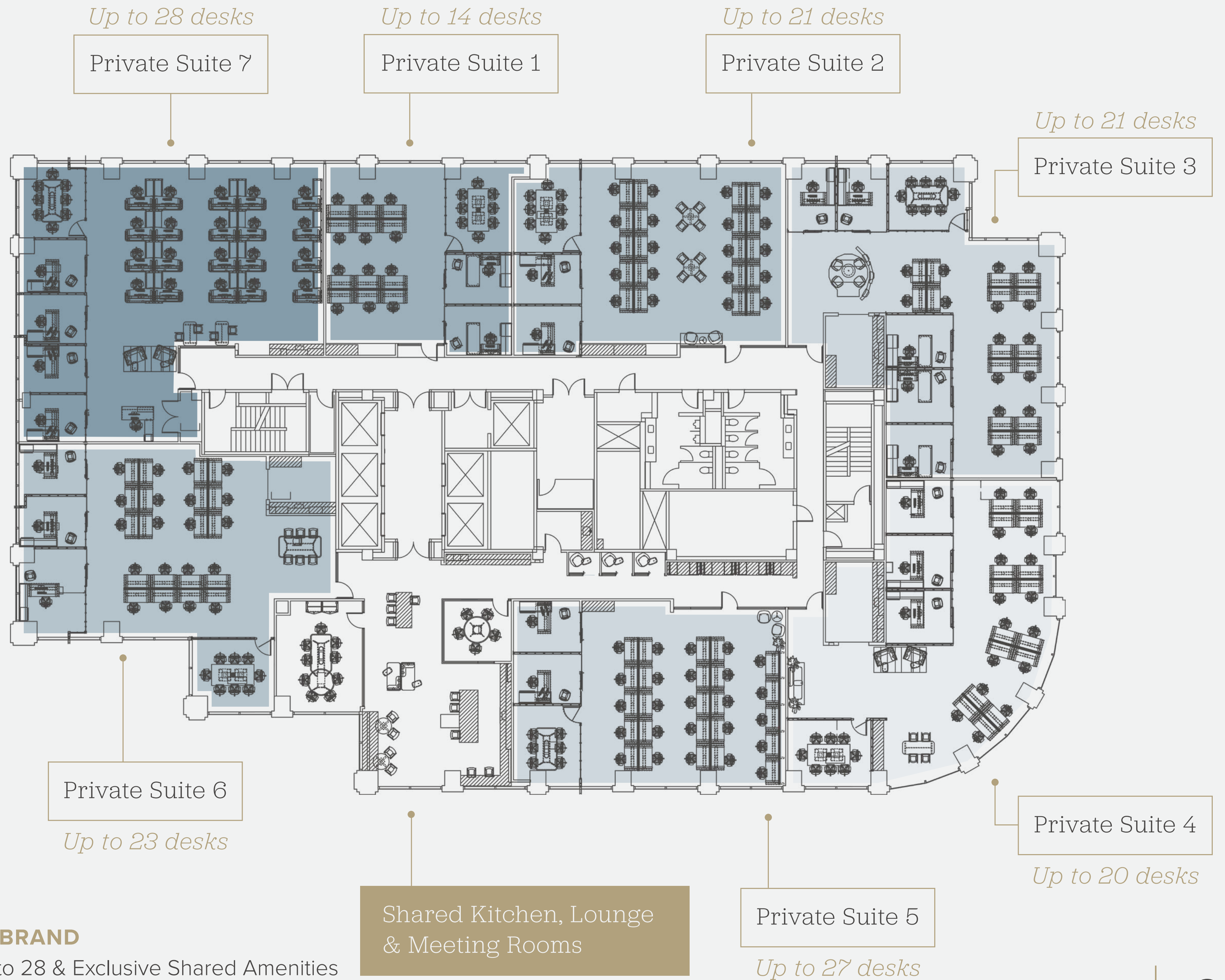
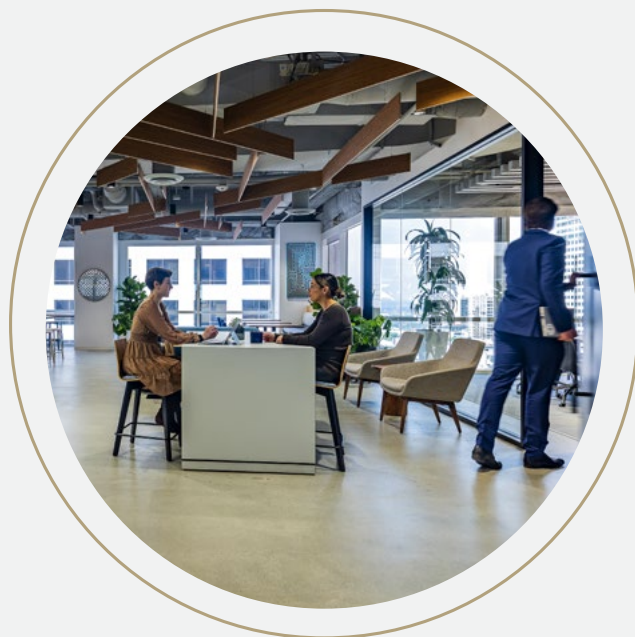
Our *Ready Collective* suites take shared workspace to the next level with private, fully furnished suites and exclusive on-floor amenities that elevate and simplify how you office. It's leasing on your own terms with no added fees – the perfect hybrid between co-working and traditional leasing.





**READY COLLECTIVE SHARED SPACE**  
@TheBrand, SoCal





## READY COLLECTIVE @THEBRAND

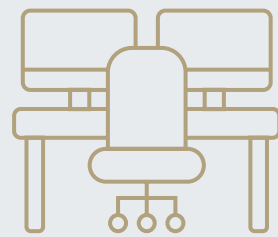
Private Suites for Teams of up to 28 & Exclusive Shared Amenities



# Get going. Get growing.

**READY COLLECTIVE** provides highly amenitized communal space with dedicated suites for an enhanced professional footprint.

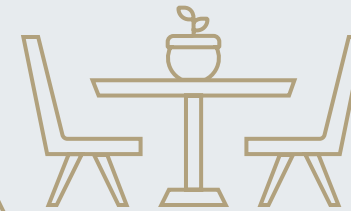
Our all-inclusive, monthly to yearly pricing offers flexibility, simplicity and predictability for start-ups & small businesses.



## Private Suites



Fully built-out and furnished, WiFi connected suites with immediate occupancy and 24-hour access.



## Exclusive Amenities



Exclusive on-floor amenities featuring meeting rooms, lounges, coffee bars, and kitchen facilities.



## Granite Community



Access to Granite's building amenities, community events, and award-winning Property Experience Team.





**READY COLLECTIVE SHARED SPACE**  
Eldridge, Houston





Shared Kitchen, Lounge  
& Meeting Rooms

Private Suite

Private Suite

Private Suite

Private Suite

Private Suite

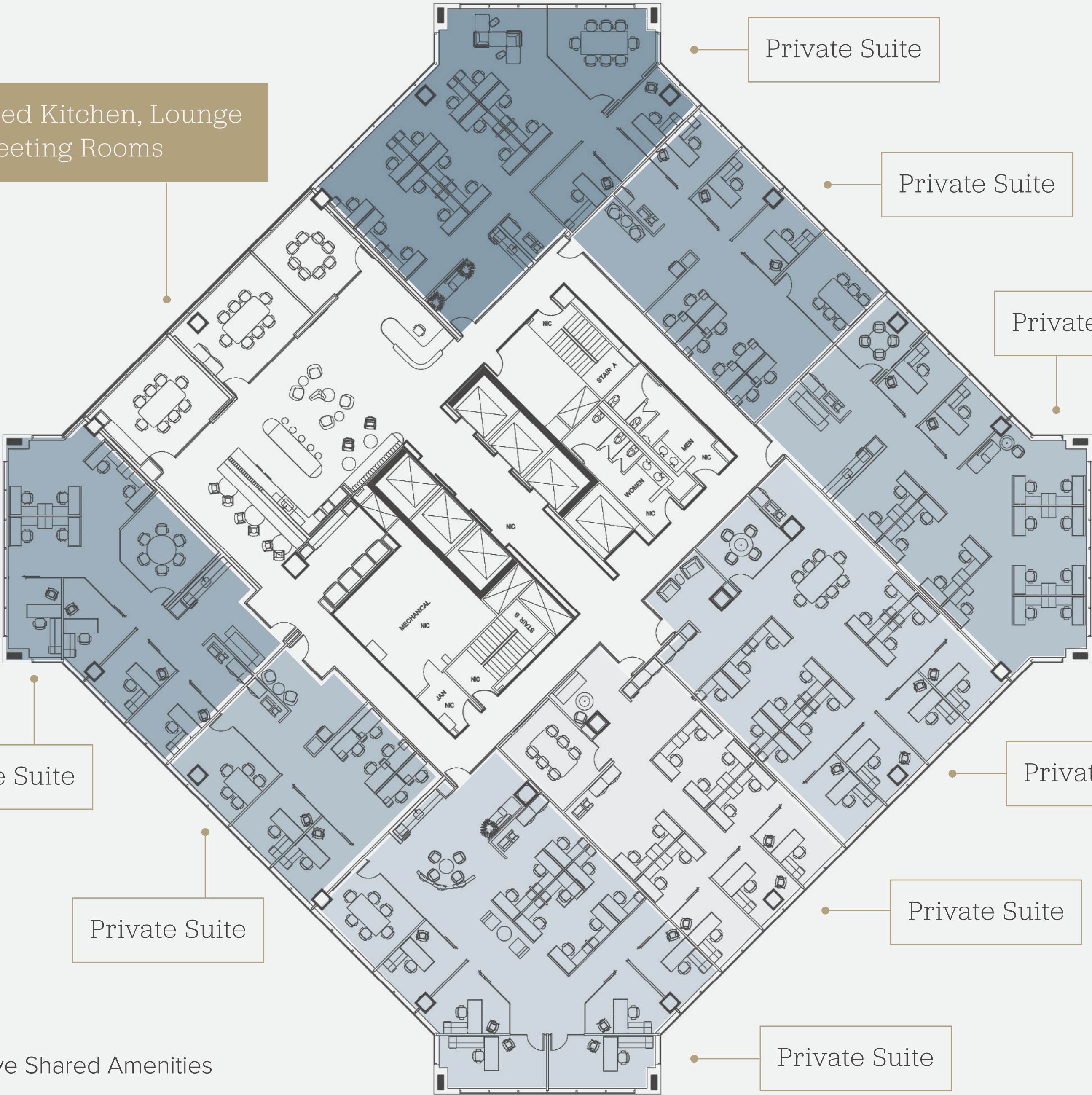
Private Suite

Private Suite

Private Suite

**READY COLLECTIVE ELDRIDGE**

Private Suites for Teams of 10-20 & Exclusive Shared Amenities





# What's included?

With *Ready Collective*, just bring your computer – everything else is ready to go.

## RENT INCLUDES

- ✓ Daily Cleaning
- ✓ Furniture
- ✓ 5x5 Telecom Ready
- ✓ Utilities (*Building Standard Hours*)
- ✓ Exclusive Ready Collective Amenities
- ✓ Full Access to Building Amenities
- ✓ Insurance & Taxes
- ✓ Granite Property Experience Team



**READY COLLECTIVE**  
On-floor Lounge, Kitchen & Meeting Spaces



**EATS**  
On-site Cafés



**THE YARD**  
Outdoor Spaces



**THE LOUNGE**  
Customer Spaces



**MEET**  
Conference Centers



**MOVE**  
Fitness Centers



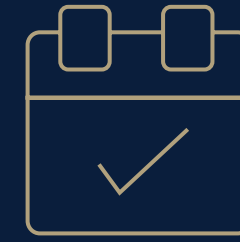
# Ready Collective Perks



Exclusive  
On-floor Amenities



Private Suites w/  
Movable Walls



Flexible Monthly to  
Yearly Lease Terms



Tech Enabled  
Meeting Rooms



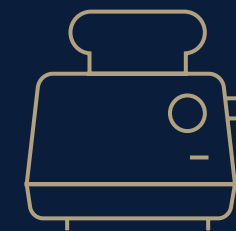
Ready Collective  
Lounge Areas



Fully Furnished  
by Haworth



5x5 Telecom  
Ready



Ready Collective  
Kitchen



Coffee &  
Bevi Water



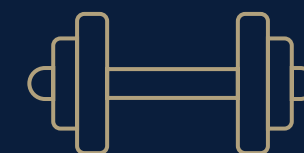
Wellness Room  
at Select Locations



Granite Property  
Experience Team



Less Paperwork  
Express Leases



Access to Building  
Amenities



Clean Air  
Technology



Building-wide  
Community Events





**READY COLLECTIVE SHARED SPACE**  
@TheBrand, SoCal



# Leasing with Granite

**evolve**® is Granite's innovative collection of office leasing solutions, designed to fit your *evolving* business needs.

When you lease with **evolve**®, you become a part of the Granite community. As one of the nation's premier commercial office owners, developers and operators, Granite offers high quality spaces managed by the best professional services in the industry.

With markets in Atlanta, Dallas, Denver, Houston, and Southern California, Granite has the size, strength and expertise to deliver the perfect **evolve**® office space solution for you.

**evolve**®

**NAIOP**  
DEVELOPER  
OF THE YEAR  
**Granite**  
2022







## Ready when you are.

To learn more about *Ready Collective* contact:

### **Houston**

Jon Dutton, [jdutton@graniteprop.com](mailto:jdutton@graniteprop.com), 713.800.9521

Andrew Elliott, [aelliott@graniteprop.com](mailto:aelliott@graniteprop.com), 713.800.9532

### **SoCal**

Patrick Church, [patrick.church@am.jll.com](mailto:patrick.church@am.jll.com), 213.239.6306

Anneke Greco, [anneke.greco@am.jll.com](mailto:anneke.greco@am.jll.com), 213.239.6307

Gil Canton, [gil.canton@am.jll.com](mailto:gil.canton@am.jll.com), 818.736.4972

Daniel Redell, [daniel.redell@am.jll.com](mailto:daniel.redell@am.jll.com), 213.239.5915

Jason Purvis, [jpurvis@graniteprop.com](mailto:jpurvis@graniteprop.com), 949.247.8500

Zack Torres, [ztorres@graniteprop.com](mailto:ztorres@graniteprop.com), 818.265.7504

[evolvegranite.work/ready-collective](https://evolvegranite.work/ready-collective)